

MODULE 11 L04

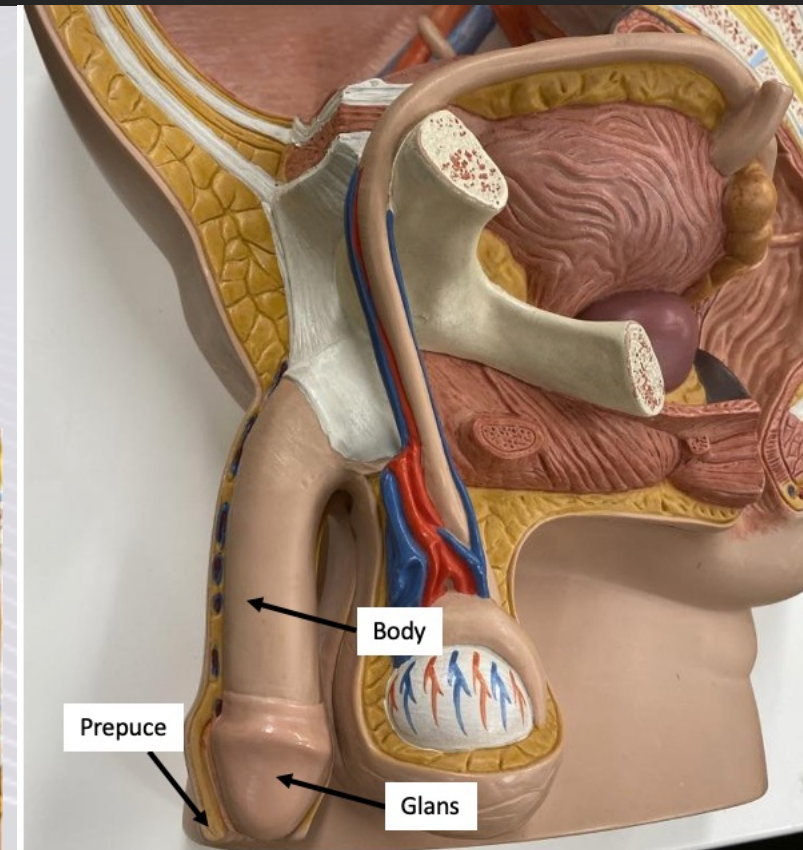
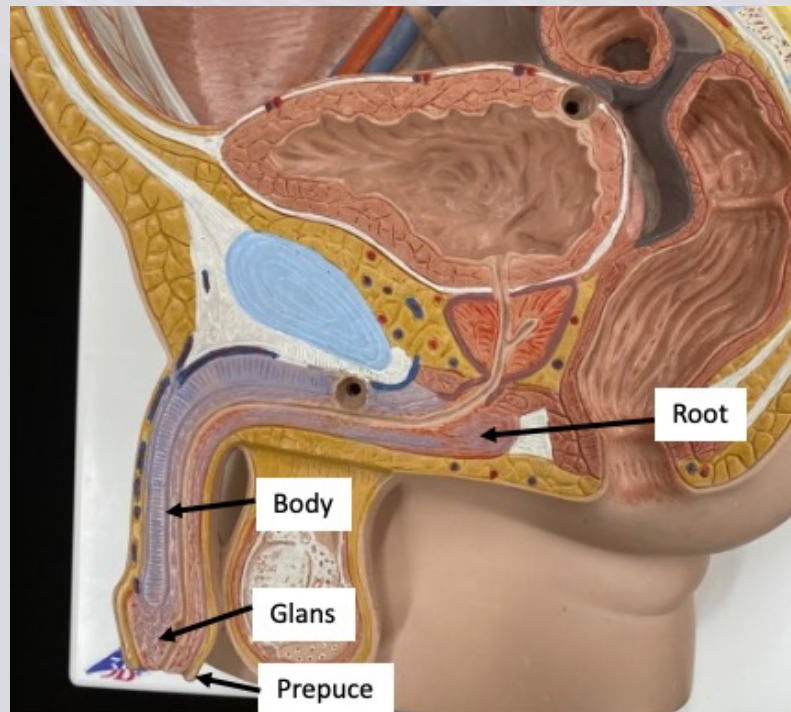
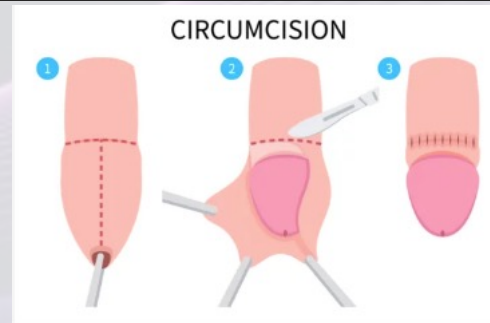
Male Reproductive System: Penis

Dr. Lisa Brinn
lbrinn@fiu.edu



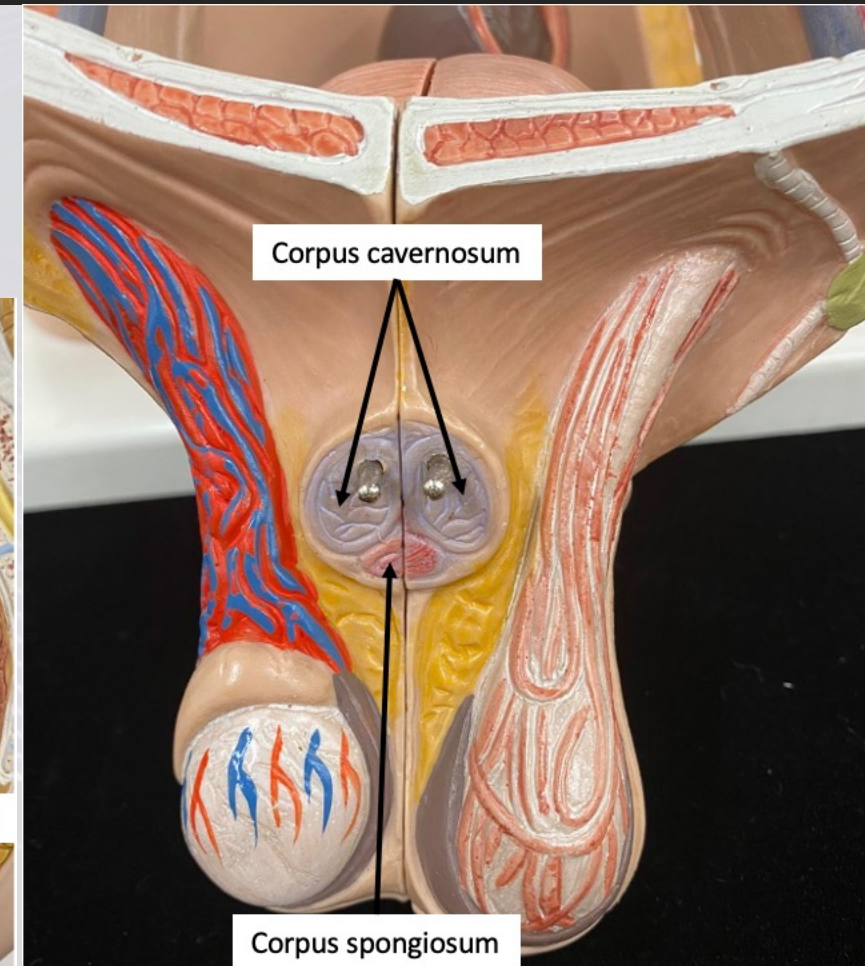
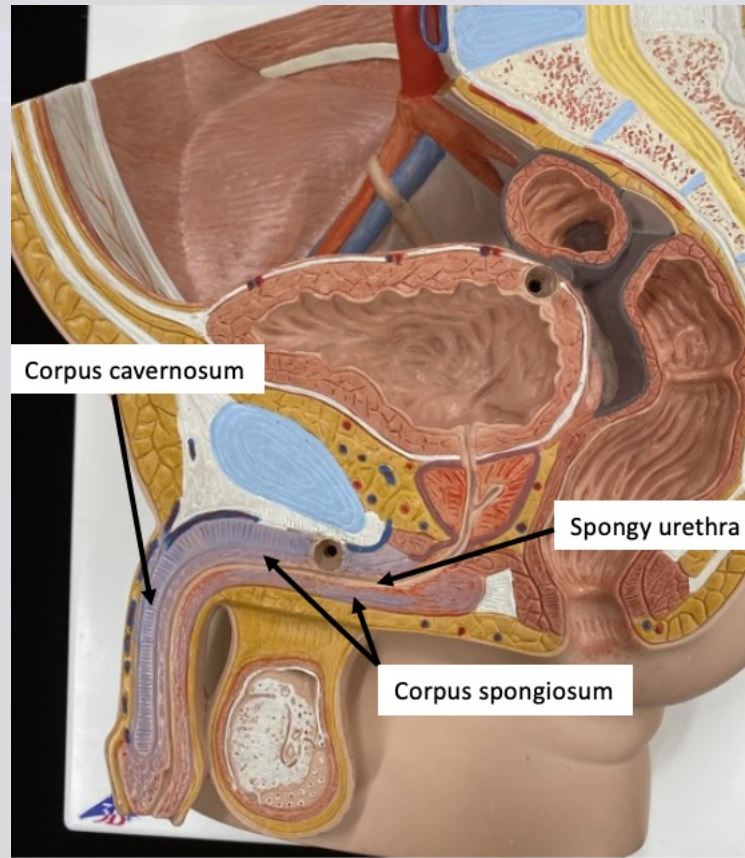
Penis

- Male organ of copulation
- Contains distal portion of urethra
 - ❖ Spongy urethra
- Functions:
 - ❖ Conducts urine
 - ❖ Introduces semen into female vagina during sexual intercourse
- Portions
 - ❖ Root
 - ❖ Body or shaft
 - ❖ Glans
- Other structure
 - ❖ Prepuce (foreskin)
 - Smegma



Erectile Tissue

- 2 corpora cavernosa (singular: corpus cavernosum)
 - ❖ Superior to corpus spongiosum
- 1 corpus spongiosum
 - ❖ Surrounds spongy urethra



Erection Reflex

- Erection = parasympathetic reflex

Parasympathetic nerves → NO



Relaxes smooth muscles arterioles → blood enters



Veins are compressed → slows blood outflow



Erection

- Major stimulus

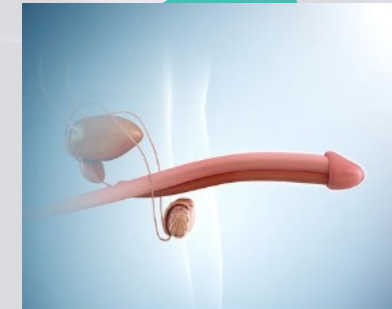
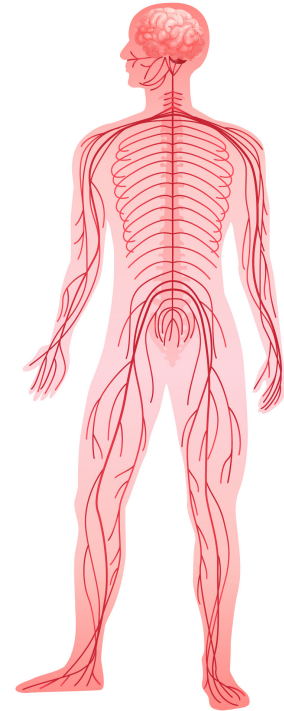
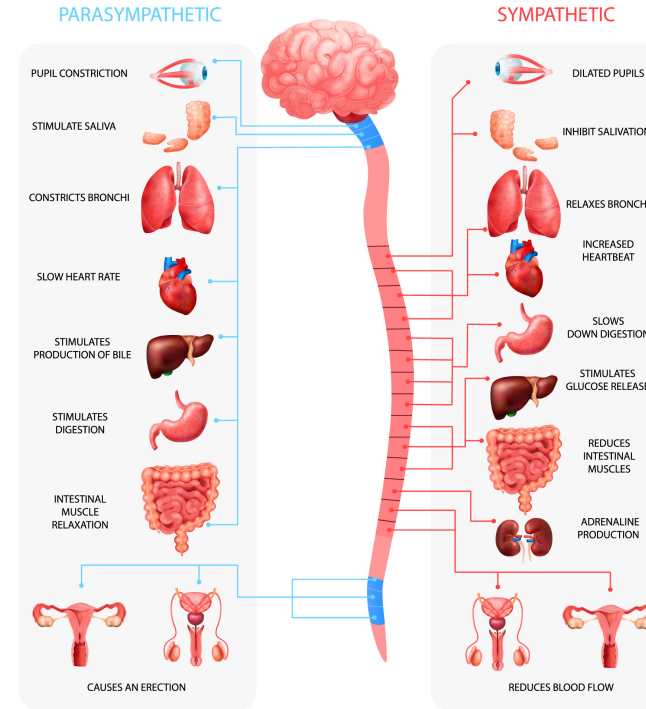
- ❖ Mechanical stimulation

- ❖ Erotic:

- Sights
- Sounds
- Smells
- Thoughts

Input from hypothalamus and limbic system

HUMAN NERVOUS SYSTEM



Ejaculation Reflex

- Powerful release of semen
 - Reflex:
 - ❖ Sympathetic
 - ❖ Somatic
- } Coordinated by spinal cord

Sympathetic nerves → smooth muscle contractions
↳ stimulate accessory glands ⇒ semen



Emission

Somatic nerves → skeletal muscle contractions



Semen is propelled from urethra to exterior (3mL)

- Ejaculation reflex
 - ❖ Smooth muscle sphincter at the base of urinary bladder closes
 - Prevents urine from being expelled
 - Prevents semen from entering urinary bladder

Epididymis
Ductus deferens
Ejaculatory ducts

